



Manor Road, Loughton, IG10

BUTLER  STAG



Impressive ground floor one/two bedroom apartment set within stunning Warren Hall, a mansion conversion boasting magnificent communal grounds and beautiful views.

With its communal grand entrance hallway this large apartment offers high ceilings, sash windows and stunning interior. Comprising a high specification kitchen with integrated appliances, bright living/dining room with beautiful views of grounds, dressing room, shower room, bathroom and extensive storage. The first floor boasts two double bedrooms, the master in enclosed and offers complete privacy whilst the second bedroom is galleried to the living space below and is more suited for occasional guests. This magnificent apartment benefits from access to a heated outdoor swimming pool, enchanting grounds, parking and a garage.



- One/ Two Bedrooms
- Communal Grounds & Swimming Pool
- Two Bathrooms
- Period Mansion Conversion
- Double Height Ceilings
- Gated Parking

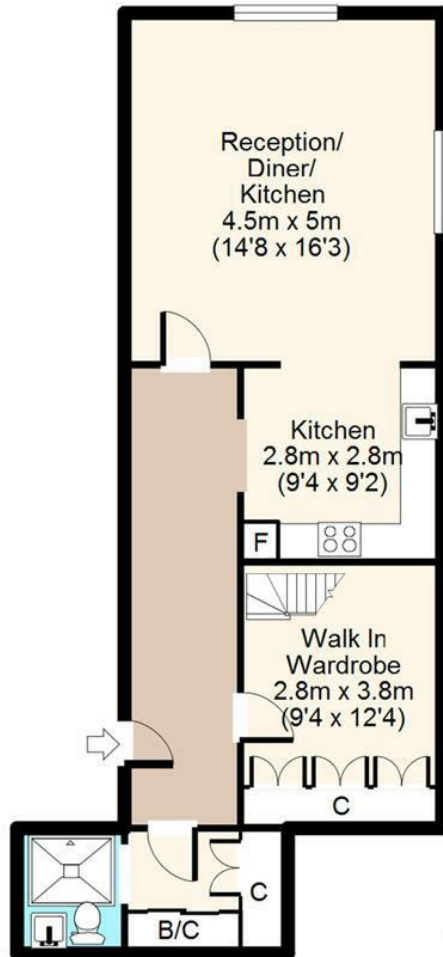




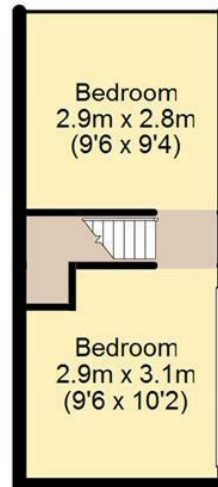
Manor Road, IG10



Ground Floor



First Floor



Total area: approx. 78 sq. metres (839 sq. feet)
For illustration purposes only - not to scale

IMPORTANT NOTICE - These particulars have been prepared in good faith and they are not intended to constitute part of an offer or contract. We have not performed a structural survey on this property and the services, appliances and specific fittings have not been tested. All photographs, measurements, floor plans and distances referred to are given as a guide and should not be relied upon.

BUTLER & STAG

☎ 01992 667666

🏠 4 Forest Drive, Theydon Bois, Essex, CM16 7EY

✉ theydon@butlerandstag.com

www.butlerandstag.uk